



TT-40P-DH



Table of Contents

Safety Information.....	2
Installation.....	3
Operation.....	3-4
Maintenance.....	5
Storage.....	5
Exploded View.....	5
Replacement Parts List.....	6
Troubleshooting.....	7
Warranty	8

⚠ IMPORTANT: Read and understand all of the directions in this manual before starting this dehumidifier. Improper use of this dehumidifier can cause serious injury. Keep this manual for future reference.

This unit is fitted with an auto defrosting operation and starts when the evaporator generates frost. This function ensures continuous running when the temperature is down to 40° F (5° C).

Specifications subject to change without notice

CONSUMER: Retain this manual for future reference.

**Pinnacle Products International, Inc. 668 Stony Hill Road #302 Yardley, PA 19067 USA
Phone: 215-891-8460 Fax: 215-891-8461 Web: www.pinnacleint.com Email: info@pinnacleint.com**

**FOR BEST RESULTS:
KEEP ALL WINDOWS, DOORS
AND OTHER OPENINGS
CLOSED.**



Residential
Dehumidifier

IMPORTANT: READ ALL INSTRUCTIONS CAREFULLY BEFORE USE OF THIS DEHUMIDIFIER. FAILURE TO COMPLY WITH THESE INSTRUCTIONS COULD RESULT IN SERIOUS PERSONAL INJURY AND / OR PROPERTY DAMAGE.

Safety Information

⚠ WARNING:

1. This unit is designed for indoor use only. Do not expose to elements or allow to become wet.
2. To guard against electric shock while operating, do not allow dehumidifier to come in contact with other grounded objects such as pipes, radiators, etc.
3. Do not use this unit next to a source of heat such as a radiator, dryer, etc., an area where oil or water is likely to splash, an area directly exposed to sunlight, near a bath, shower or swimming pool, or in a greenhouse.
4. Always store the unit upright in order to maintain the compressor in a proper working condition. ***Leave the unit upright for at least 24 hours prior to operating.***
5. BEFORE moving, storing, and/or changing operating locations, be sure the dehumidifier is turned off, unplugged AND the water tank is empty.
6. Operate only on 115 volt 60 Hz (cycle) current with a minimum of a 15 amp circuit.
7. Before operating always check dehumidifier for loose or damaged parts. Inspect power cord for any damage. Never use dehumidifier if any parts are damaged or missing. There are no user serviceable parts.
8. DO NOT use with an extension cord. Use only with a grounded 3 prong outlet furnished on the dehumidifier's power cord. Always keep power cord away from heat, oil, and sharp edges.
9. Disconnect dehumidifier from power source when not in use, before servicing and when cleaning or repairing.
10. Repair of this dehumidifier should be done by a qualified electrician.
11. In case of power failure, turn dehumidifier off at control panel to prevent unexpected restarting and possible component damage.
12. Keep children away from dehumidifier at all times.

**FOR BEST RESULTS:
KEEP OUT OF DIRECT SUN-
LIGHT AND DO NOT USE
NEAR SOURCES OF HEAT.**



Residential Dehumidifier

Installation

1. Be sure dehumidifier is on level ground which is strong enough to support the unit with a full bucket of water.
2. Allow at least 15-18 inches of space on all sides of the unit to allow adequate air circulation.
3. When operating your dehumidifier, keep all outside doors, windows and other openings closed. Additional humidity from outdoors will increase the workload of your unit.
4. At room temperatures (floor level) below 65 degrees F, the evaporator coils will start to frost over. This unit is fitted with an auto defrosting operation and starts when the evaporator generates frost. This function ensures continuous running when the temperature is down to 40° F (5° C).

It is recommended that you install your dehumidifier in an area where the room temperature will not fall below 40 degrees F. This unit was designed to work in an environment between 40° F and 90° F.

Operation

Turning the unit ON or OFF:

1. Plug in the power cord into an approved outlet. The computer system of this unit will go through a self-check. When normal, the Power Indicator will slowly flash.
2. Press the Power Button. The Power Indicator will stay on, and your unit will start operating under

dehumidifying mode with the factory setting of 60% relative humidity (RH). Pressing the Humidity + or - Button will change the humidity setting (see Figure 3 on Page 4).

3. Pressing the Continue Button will put the unit into continuous dehumidifying mode; at this point the Humidity + or - Button will become inactive.
4. To turn off unit, simply press the Power Button. The Power Indicator will then not be lit. You do not need to unplug the unit unless the unit will not be in use for a long time.

The Water Tank:

1. Water will drain into the Water Tank (shown in Figure 2). When the tank is full and the unit stops operating, the Full Indicator will flash (see Figure 3).
2. Do not remove the water tank while the unit is running. This will cause water to spill. If Full Indicator is not lit but you want to empty the water tank, Press the Power Button and wait a moment for the water to finish draining before removing the tank.

To remove Water Tank (see Figure 5 on page 7):

1. Grip both sides of the Water Tank and slide out straight to avoid spilling water. ***Do not set down on ground, as the bottom of the Water Tank is not even!***
2. Use the handle to carry Water Tank and to empty.
3. To replace, slide Water Tank gently all the way into unit.

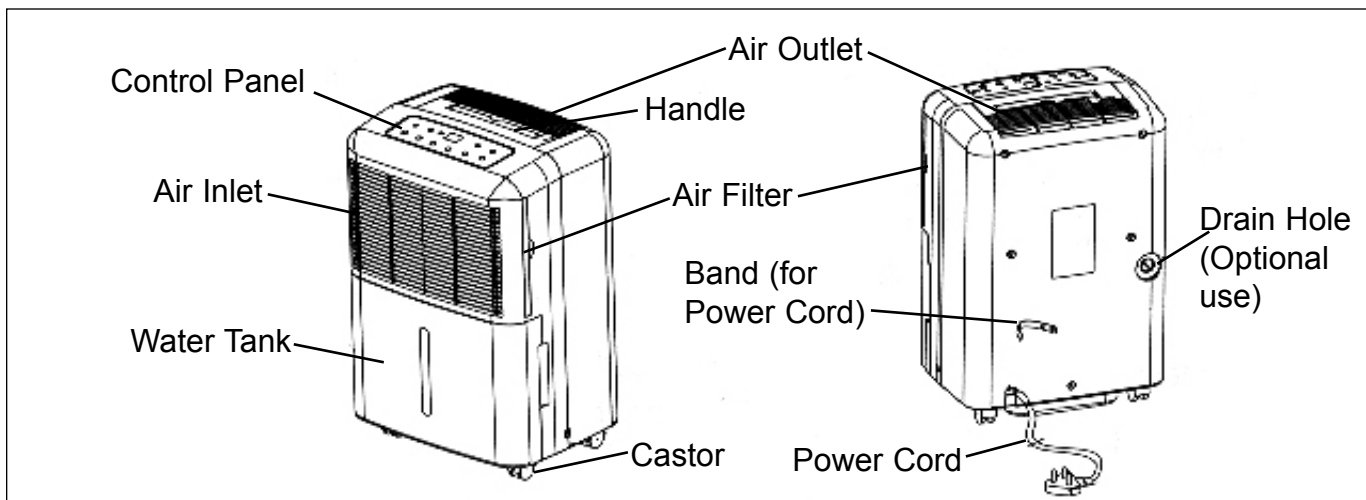


Figure 2: TT-40P-DH Product Description

FOR BEST RESULTS:
CLEAN AIR FILTER EVERY
TWO WEEKS.



Residential
Dehumidifier

Operation (cont.)

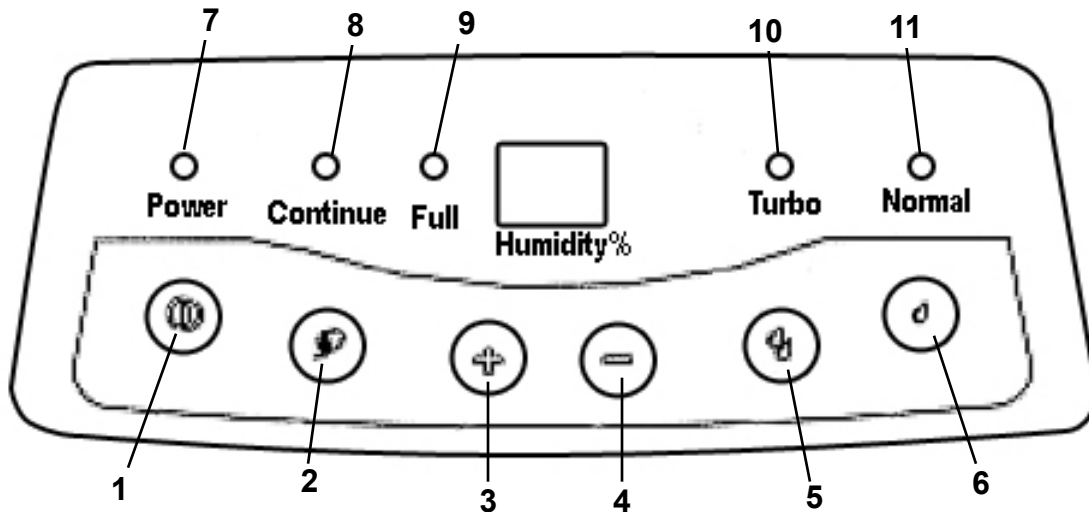


Figure 3: Control Panel

NOTE: This unit has an automatic shut-off. If the bucket is full or is not replaced correctly, the unit will not start and will display a "P2" warning. Please be sure bucket is not full or inserted correctly.

For Continuous Drainage:

If a drain is located nearby, a 1/2" ID hose (sold separately) can be connected to the unit for continuous draining.

1. On the rear on the unit, carefully remove the rubber plug from the drain hole (see Figure 2 on page 3) and slide the drain hose into the drain hole.
2. Remove the Water Tank then connect the water hose to the connector located above the water tank to the left.
3. Be sure the hose has no bends or kinks.
4. Place the other end of the hose into a suitable drainage facility, and **replace Water Tank**.

NOTE: The drain is not pressured; it is gravity assisted. Please be sure to note that the end of the hose in the draining facility **MUST** be below the connector in the unit. Any inclination of the drain hose will cause the drain hose to back up to the unit and cause a leak!

The Control Panel:

1. **Power Button:** Power indicator blinks slowly when the unit is plugged in. Pressing the Power

- Button puts the unit directly into **Dehumidifying** operation at the original factory humidity setting (60% RH). Pressing the Power Button again will stop the unit from operating.
2. **Continue Button:** Pressing this button while the unit is operating will put the unit into **Continuous Dehumidifying** mode.
3. **Humidity + Button:** Pressing this button while the unit is operating will increase the humidity setting. The range is from 35%RH to 80%RH.
4. **Humidity - Button:** Pressing this button while the unit is operating will decrease the humidity setting. The range is from 80%RH to 35%RH.
5. **Turbo Fan Button:** Pressing this button puts the fan speed on high.
6. **Normal Fan Button:** Pressing this button puts the fan speed on low.
7. **Power Indicator:** At first when connecting to power, the Power Indicator will flash slowly. Once unit is operating it will stay on, and turn off when unit is off.
8. **Continue Indicator:** Lights up when unit is in **Continuous Dehumidifying** mode.
9. **Full Indicator:** Lights up when Water Tank is full; the unit then will stop operating.
10. **Turbo Indicator:** Lights up when the Turbo Button is pressed and the fan is on high.
11. **Normal Indicator:** Lights up when the Normal Fan Button is pressed and the fan is on low.

WHEN IN CONTINUOUS DEHUMIDIFYING MODE, HUMIDITY + AND - BUTTONS ARE DISABLED.



Residential Dehumidifier

Maintenance

Cleaning the Air Filter:

1. Remove Air Filter (see Figure 4 on page 6).
2. Wash with clean water, and then dry carefully.
3. Slide Air Filter back into unit once it is completely dry.

NOTE: Clean the Air Filter once every two weeks to prevent reduced performance of your unit!

Cleaning the Unit Enclosure:

1. Use a soft clean cloth to wipe the surface. Do not use water as this may cause an electrical shock.

Cleaning the Water Tank:

1. Wash the tank using warm water (about 100° F) with a mild detergent. Rinse and allow to dry. Replace once the tank is dry.

IMPORTANT:

- Be sure to unplug unit before cleaning.
- Do not use any type of chemical agents, thinners or fuel to clean the unit as this may damage the unit.
- Do not wash the unit directly under a tap or a hose. The electrical components inside will become damaged and your unit will be unsafe!

Storage

1. Be sure to wash the Air Filter and drain the Water Tank before storing your dehumidifier.
2. Water tank should be completely dry before storing for long periods of time.
3. Store cooler in its original carton.

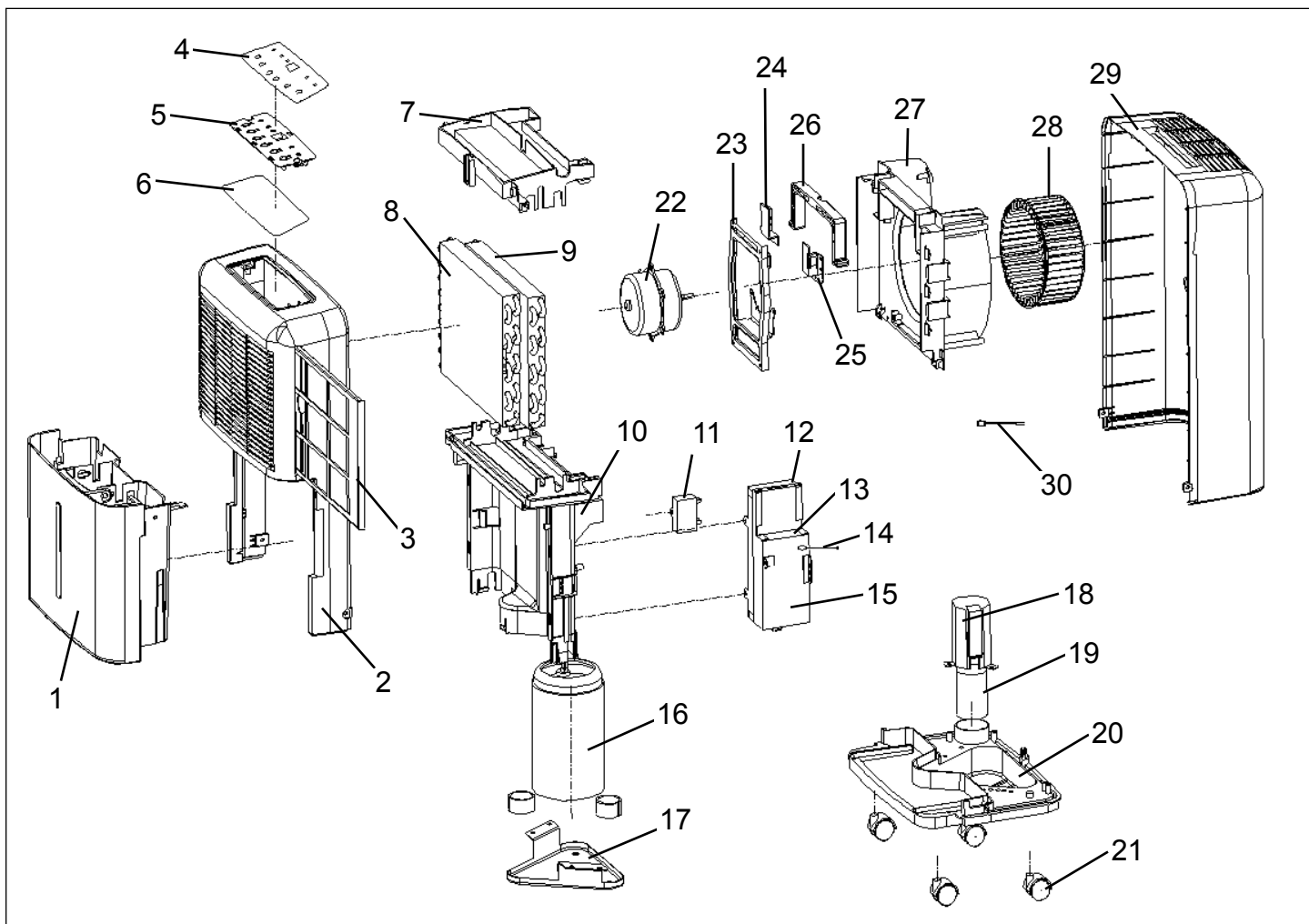


Figure 3: Exploded View of TT-40P-DH

**NO SERVICEABLE PARTS
INSIDE. SEE PAGE 7 FOR
TROUBLESHOOTING.**



**Residential
Dehumidifier**

Replacement Parts

Item #	Description	Part Number
1	Water Tank Assembly	35-001-0100
2	Front Panel	35-002-0100
3	Air Filter	35-002-0200
4	Display Label	35-003-0100
5	Control Panel	35-003-0200
6	Display PCB	35-003-0300
7	Display Box	35-003-0400
8	Evaporator	35-004-0100
9	Condenser	35-004-0200
10	Base Pan Bracket	35-005-0100
11	Motor Capacitor	35-005-0200
12	Electronic Control Box	35-005-0300
13	Control PCB	35-005-0400
14	Humidity Sensor	35-005-0500
15	Electronic Control Box Cover	35-005-0600
16	Compressor	35-006-0100
17	Compressor Bracket	35-006-0200
18	Compressor Capacitor Cover	35-006-0300
19	Compressor Capacitor	35-006-0400
20	Base Pan	35-007-0100
21	Caster	35-007-0200
22	Motor	35-008-0100
23	Motor Mounting Bracket	35-008-0200
24	Handle Support A	35-009-0100
25	Handle Support B	35-009-0200
26	Handle	35-009-0300
27	Scroll	35-010-0100
28	Turbo Fan	35-010-0200
29	Rear Panel	35-011-0100
30	Evaporator Sensor	35-012-0100

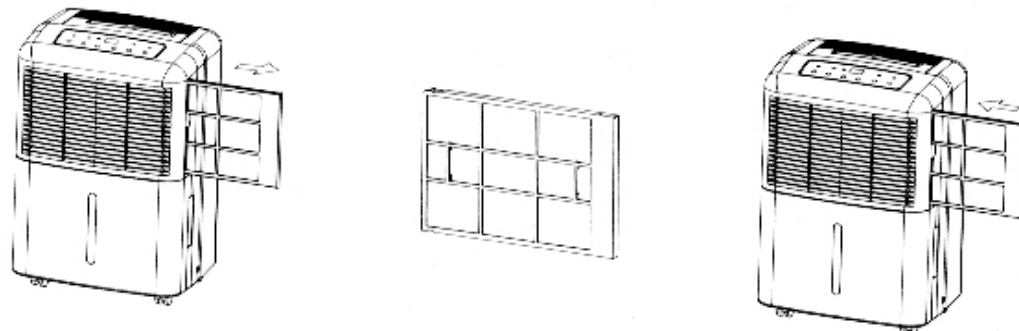


Figure 4: Maintenance on the Air Filter

Troubleshooting Guide

Problem	Possible Cause	Corrective Action
Dehumidifier does not operate	1. No power	Inspect Power Cord for damage. Be sure dehumidifier is plugged in and turned on.
	2. Water Bucket is full ('P2') or is not installed correctly	Remove Water Tank (as shown in Figure 5 below) and empty Water Tank. 'P2' will display in Control Panel. Be sure Water Tank has been replaced in the unit correctly or unit will not operate..
	3. Unit is restarting	When the unit has been re-started there will be a 2 minute delay.
	4. Defrost mode ('P1')	The unit will automatically restart after defrosting is completed. 'P1' will display in Control Panel.
	5. Room humidity level is lower than unit setting	Press the Humidity - Button to lower the humidity setting below room humidity level (See Page 4).
Decreased Performance	1. Blocked Air Filter	Wash Air Filter.
	2. Room windows and doors are open	Close windows and doors.
	3. Obstacles in air flow	Remove obstacles from air inlet and air outlet.
	4. Room temperature is too low	Unit will operate efficiently when room temperature is between 40°F (5°C) and 95°F (35°C)
Control Panel shows 'E1'	1. Humidity Sensor is off or not working properly.	Turn the unit off, unplug and contact Customer Service.
Control Panel shows 'E2'	1. Humidity Sensor is off or not working properly.	Turn the unit off, unplug and contact Customer Service.

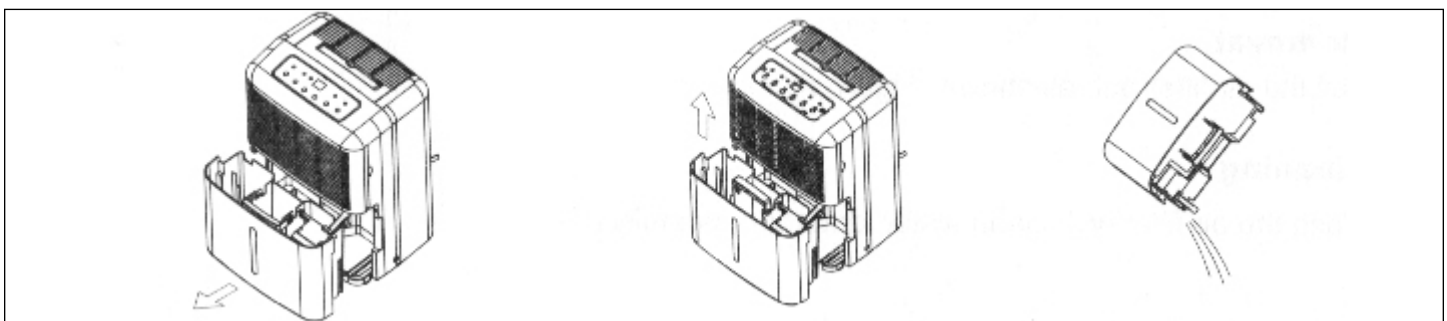


Figure 5: Emptying the Water Tank

Pinnacle Products International, Inc. reserves the right to make any changes in materials, specifications, prices or design without notice. **Pinnacle Products International, Inc.** may also discontinue items at any time.

Specifications subject to change without notice

PLEASE NOTE YOUR
MODEL#, SERIAL#, AND DATE
OF PURCHASE IN THE
SPACES BELOW.



Residential
Dehumidifier

1 YEAR LIMITED WARRANTY

Pinnacle Products International, Inc. warrants this product to the original retail purchaser only, to be free from defects in material and workmanship for a period of one (1) year from the date of initial purchase. This product must be properly installed, maintained and operated in accordance with the instructions provided.

Pinnacle Products International, Inc. requires reasonable proof of your date of purchase from an authorized retailer or distributor. Therefore, you should keep your sales slip, invoice, or cancelled check from the original purchase. This Limited Warranty shall be limited to the repair or replacement of parts, which prove defective under normal use and service within the warranty period, and which **Pinnacle Products International, Inc.** shall determine at its reasonable discretion.

This warranty does not apply to products purchased for rental use.

This Limited Warranty does not cover replacement of the Air Filter, or any failures or operating difficulties due to normal wear and tear, accident, abuse, misuse, alteration, misapplication, improper installation or improper maintenance and service by you or any third party. Failure to perform normal and routine maintenance on the dehumidifier, shipping damage, damage related to insects, birds, or animals of any kind, and damage due to weather conditions are also not covered. In addition, the Limited Warranty does not cover damage to the finish, such as scratches, dents, discoloration, rust or other weather damage, after purchase.

All transportation costs for the return of the damaged product or parts will be the responsibility of the purchaser. Upon receipt of damaged item, **Pinnacle Products International, Inc.** will examine the item and determine if defective. **Pinnacle Products International, Inc.** will repair or replace and return the item, freight pre-paid. If **Pinnacle Products International, Inc.** finds the item to be in normal operating condition, or not defective, the item will be returned freight collect.

This Limited Warranty is in lieu of all other express warranties. **Pinnacle Products International, Inc.** disclaims all warranties for products that are purchased from sellers other than authorized retailers or distributors.

AFTER THE PERIOD OF THE ONE (1) YEAR LIMITED WARRANTY EXPIRES, **Pinnacle Products International, Inc.** DISCLAIMS ANY AND ALL IMPLIED WARRANTIES, INCLUDING WITHOUT LIMITATION THE IMPLIED WARRANTIES OF MERCHANTABILITY AND FITNESS FOR A PARTICULAR APPLICATION. FURTHER, **Pinnacle Products International, Inc.** SHALL HAVE NO LIABILITY WHATSOEVER TO PURCHASER OR ANY THIRD PARTY FOR ANY SPECIAL, INDIRECT, PUNITIVE, INCIDENTAL, OR CONSEQUENTIAL DAMAGES. **Pinnacle Products International, Inc.** assumes no responsibility for any defects caused by third parties. This Limited Warranty gives the purchaser specific legal rights; a purchaser may have other rights depending upon where he or she lives. Some states do not allow the exclusion or limitation of special, incidental or consequential damages, or limitations on how long a warranty lasts, so the above exclusion and limitations may not apply to you.

Pinnacle Products International, Inc. does not authorize any person or company to assume for it any other obligation or liability in connection with the sale, installation, use, removal, return, or replacement of its equipment, and no such representations are binding on **Pinnacle Products International, Inc.**

Always be sure to specify model number and serial number when making any claim with **Pinnacle Products International, Inc.** For your convenience use the space provided below to list this information:

Model #: _____

Serial #: _____

Date of Purchase: _____