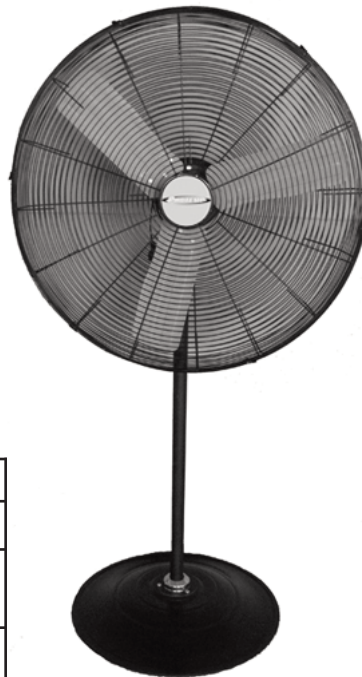




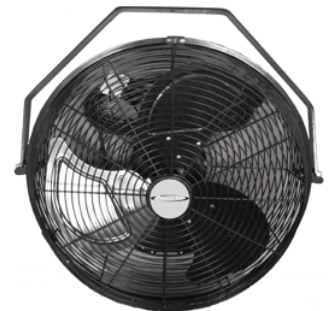
Model #s: BCB-30P-DDF-A, PT-30P-DDF-A, BCB-24-DDF,
PT-24-DDF, BCB-20F-DDF-A, PT-20F-DDF-A,
BCB-18W-DDF-A, PT-18W-DDF-A

Table of Contents

Safety Information.....2
 Installation and Assembly.....2-3
 Operation.....3
 Maintenance and Storage.....3
 30" Pedestal Fan Expl. View and Parts List.....4
 24" Barrel Fan Expl. View and Parts List.....5
 20" Floor Fan Expl. View and Parts List.....6
 18" Wall Fan Expl. View and Parts List.....7
 Warranty8



Model	MAX HP	CFM		
		HIGH	MED	LOW
30P-DDF	2/7 HP	8,500	X	7,200
24-DDF	1/4 HP	7,500	X	6,250
20F-DDF	1/5 HP	6,000	3,600	4,300
18W-DDF	1/5 HP	6,000	5,300	4,700



IMPORTANT: Read and understand all of the directions in this manual before assembling, starting or servicing the fan. Improper use of this fan can cause serious injury. Keep this manual for future reference.

This product meets or exceeds the requirements of OSHA 1910.212(a)(5), the standard which regulates electric fan blade safety, and is certified, by Underwriters Laboratories, Inc.

Specifications subject to change without notice

CONSUMER: Retain this manual for future reference.

Pinnacle Products International, Inc. 668 Stony Hill Road #302 Yardley, PA 19067 USA
Phone: 215-891-8460 Fax: 215-891-8461 Web: www.pinnacleint.com Email: info@pinnacleint.com

IMPORTANT: READ ALL INSTRUCTIONS CAREFULLY BEFORE ASSEMBLY, SERVICE OR USE OF THIS FAN. FAILURE TO COMPLY WITH THESE INSTRUCTIONS COULD RESULT IN SERIOUS PERSONAL INJURY AND / OR PROPERTY DAMAGE.

Safety Information

WARNING:

1. This unit is designed for indoor use only. Do not expose to elements or allow to become wet.
2. To guard against electric shock while operating, do not allow fan to come in contact with other grounded objects such as pipes, radiators, etc.
3. To reduce the risk of electrical shock, do not use with any solid state speed control device.
4. Do not use to exhaust hazardous chemicals or use near any flammable liquids or gases as sparks from motor may ignite fumes.
5. Turn off, unplug unit, and wait for fan to stop before moving, storing, and / or changing operating locations.
6. Operate only on 115 volt 60 Hz (cycle) current with a minimum of a 15 amp circuit.
7. Before operating always check fan for loose or damaged parts. Inspect power cord for any damage. Never use fan if any parts are damaged or missing. Never use fan without safety guards attached.
8. When used with an extension cord, use only cord of proper size (Amp rating), UL listed, and with receptacle to accept three prong grounded plug furnished on the fan's power cord. Always keep power cord and extension cords away from heat, oil, and sharp edges. Inspect cords periodically and replace if damaged.
9. Disconnect fan from power source when not in use, before servicing and when cleaning or repairing.
10. Repair of this appliance should be done by a qualified electrician.
11. In case of power failure, turn fan off at power knob or chain to prevent unexpected restarting and component damage.
12. Keep children away from fan at all times.

Installation and Assembly

30" PEDESTAL FAN:

1. Remove 5 screws in Base. Insert spring into Lower Support Pole. Attach Base Flange (Item 14 on page 4) to Upper Base using the 5 screws
2. Insert Motor Support Assembly into Pipe Assembly. Insert Pivot Screw and tighten with Wing Nut.
3. Insert Motor Assembly into Motor Support Assembly (Item 18) and tighten with Machine Screw..
4. Remove the screws on the Motor and attach the Rear Grille onto groove in motor and replace screws See Fig. 2).
5. Loosen the set screw on the back of the Fan Blade Assembly and slide onto the fan shaft.
6. Position screw over groove on shaft and tighten.set screw using 6mm hex wrench included.
7. Attach Front Grille to Rear Grille using screws and nuts included (Items 3 and 10).

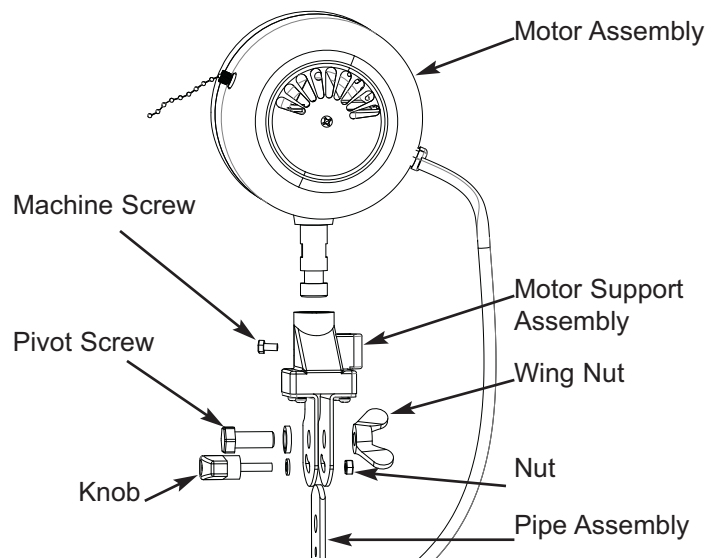


Figure 1: Attaching Motor to Motor Support Assembly

24" BARREL FAN:

1. Loosen the adjusting nut on Frame Bracket B (Item 22 on page 5).
2. Carefully separate the Main Frame (Item 20) and retighten nut on Frame Bracket B.
3. To adjust airflow, tilt fan to desired position.

**NEVER LEAVE A FAN
OPERATING UNATTENDED**



**Portable
Air Circulator**

Installation and Assembly (continued)

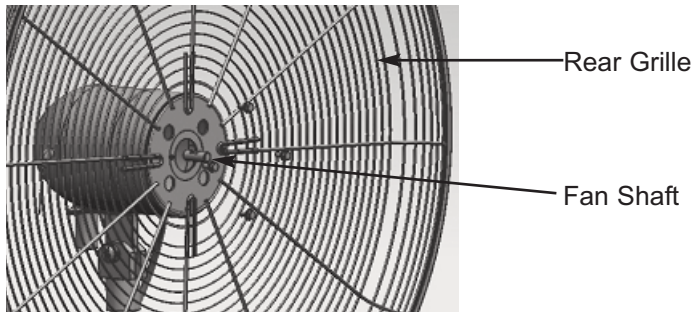


Figure 2: Attaching Rear Grille to Shaft - Pedestal Fan

20" FLOOR FAN:

1. Remove 1 screw from each Frame Support L and R (Items 7 and 19 on page 6).
2. Slide Frame Support L and Frame Support R into Support Frame (Item 21) and line up holes for screw.
3. Re-attach screw to Frame Support L and Frame Support R.

18" WALL FAN:

⚠️ WARNING: The installer **MUST** be certain that the support bracket is mounted to a minimum of a 2x4" stud, and that it is able to support 50 pounds continuously.

1. Attach fan to wall or ceiling using hanger.
2. Be sure fan is attached to a suitable beam when hanging.

Operation

To start fan:

1. If your fan has a Power Knob, be sure it is in the 0 (OFF) position.
2. Connect to an approved power source.
3. Make sure area is clear from all obstructions.
4. Turn Power Knob or pull chain once to the 1 (LOW) position and allow to operate for 10 seconds.
5. Once 10 seconds have passed, you may now change the fan speed.

To turn off the fan, simply return Power Knob to the 0 (OFF) position. or cycle through speeds to turn fan off with chain.

Note: For longer parts life, after 10 hours of continuous operation, turn fan off for 15 minutes to allow motor to cool.

Maintenance and Storage

1. Inspect your fan before each use. Check all wires and extension cords, following the Safety Information.
2. After use, always be sure fan's power is in the 0 (OFF) position before unplugging. Secure power cord with cord wrap on back of fan to keep cord off the ground when transporting fan

Troubleshooting Guide

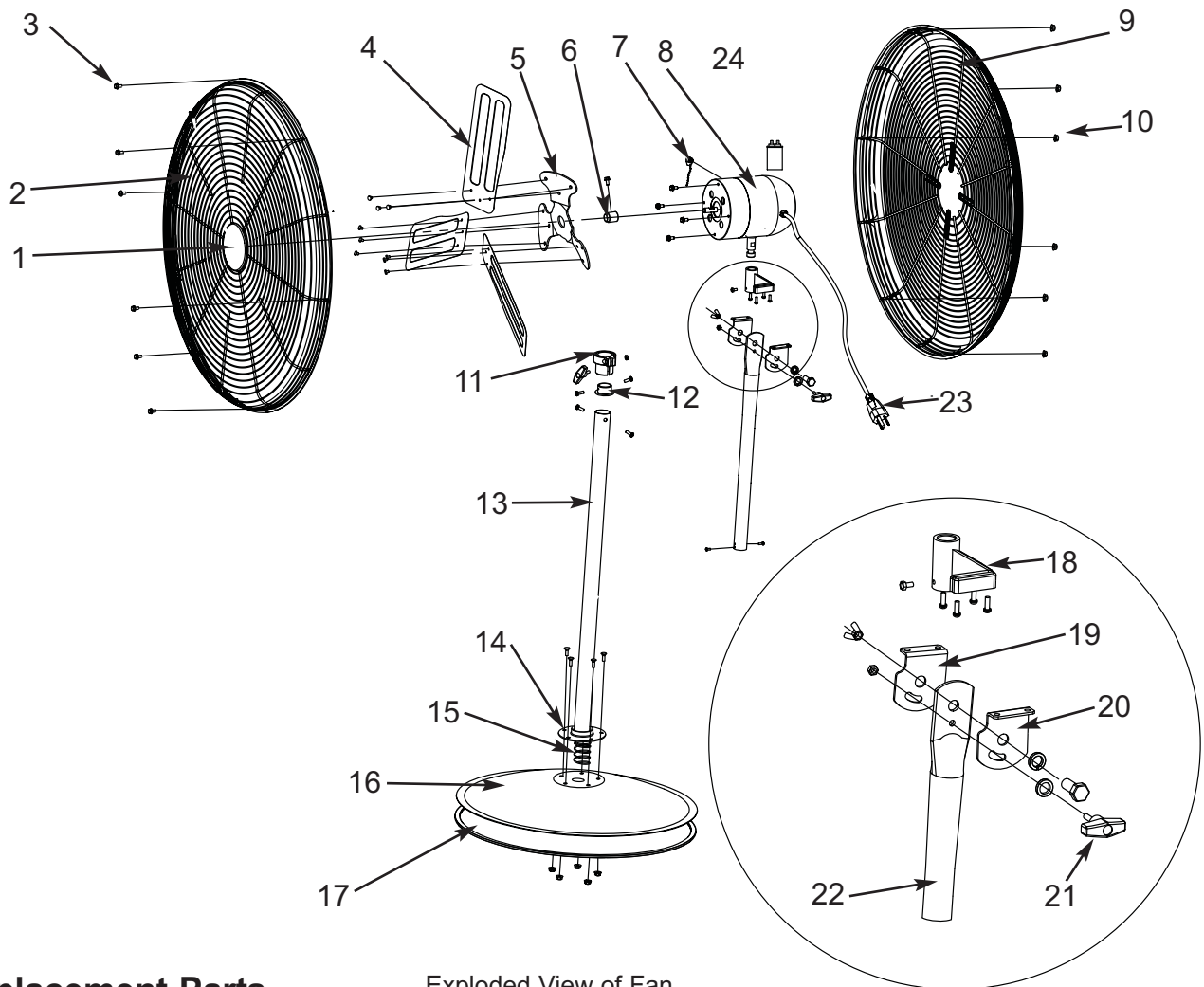
Problem	Possible Cause	Corrective Action
Fan does not operate	1. No power	Inspect Power Cord for damage. Be sure unit is plugged in and turned on.
	2. Bad motor	Replace motor
Reduced Air Flow	1. Obstruction	Turn off and unplug fan. Remove guard and make sure nothing is obstructing the fan blades.
	2. Bad switch or capacitor	Replace switch or capacitor (Note: To prolong life of fan, operate fan first in 1(LOW) for 5-10 seconds before switching to higher speed.
Excess Noise (vibration, squealing)	1. Fan is not on level ground	Turn off fan, and move unit to smooth level surface.
	2. Guard is not secure	Check guard screws to be sure all are tight.

NEVER LEAVE A FAN
OPERATING UNATTENDED



Portable
Air Circulator

Exploded View - 30" Pedestal Fan



Exploded View of Fan

Replacement Parts

Item #	Description	Part Number
1	Logo Plate PT / BCB	95-043-0340 / 45
2	Front Grille	95-032-0180
3	Grille Screw	95-033-0220
4	Fan Blade Assembly	95-003-0630
5		
6		
7	Power Switch	95-031-0140
8	Motor	95-030-0540
9	Rear Grille	95-032-0280
10	Grille Nut	95-034-0120
11	Pipe Ring	95-017-0215
12	Pipe Support	95-017-0220

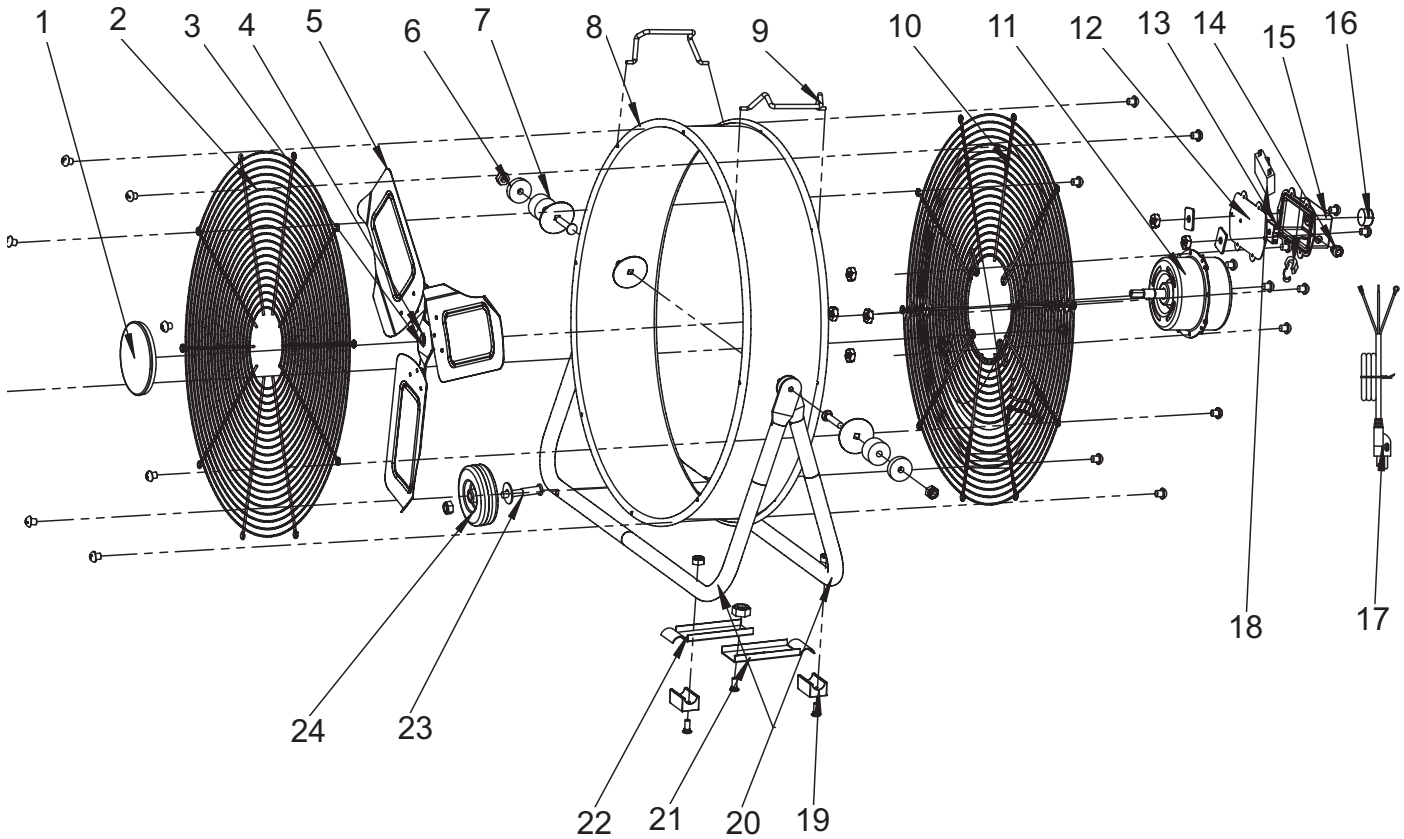
Item #	Description	Part Number
13	Lower Support Pole	95-017-0205
14	Base Flange	95-024-0210
15	Latch Spring	95-060-0210
16	Upper Base	95-024-0225
17	Lower Base	95-024-0235
18	Motor Support	95-030-0560
19	Left Support	95-030-0570
20	Right Support	95-030-0575
21	Knob	95-015-0210
22	Upper Support Pole	95-010-0305
23	Power Cord	95-026-0260
24	Capacitor	95-004-0240

NEVER LEAVE A FAN
OPERATING UNATTENDED



Portable
Air Circulator

Exploded View - 24" Barrel Fan



Replacement Parts

Item #	Description	Part Number
1	Logo Plate	95-043-0330
2	Front Grille	95-032-0170
3	Fan Blade Assembly	95-003-0620
4		
5		
6	Rubber Washer A	95-077-0100
7	Rubber Washer B	95-077-0110
8	Barrel	95-001-0300
9	Handle	95-006-0210
10	Rear Grille	95-032-0270
11	Motor	95-030-0530
12	Switch Holder	95-031-0320

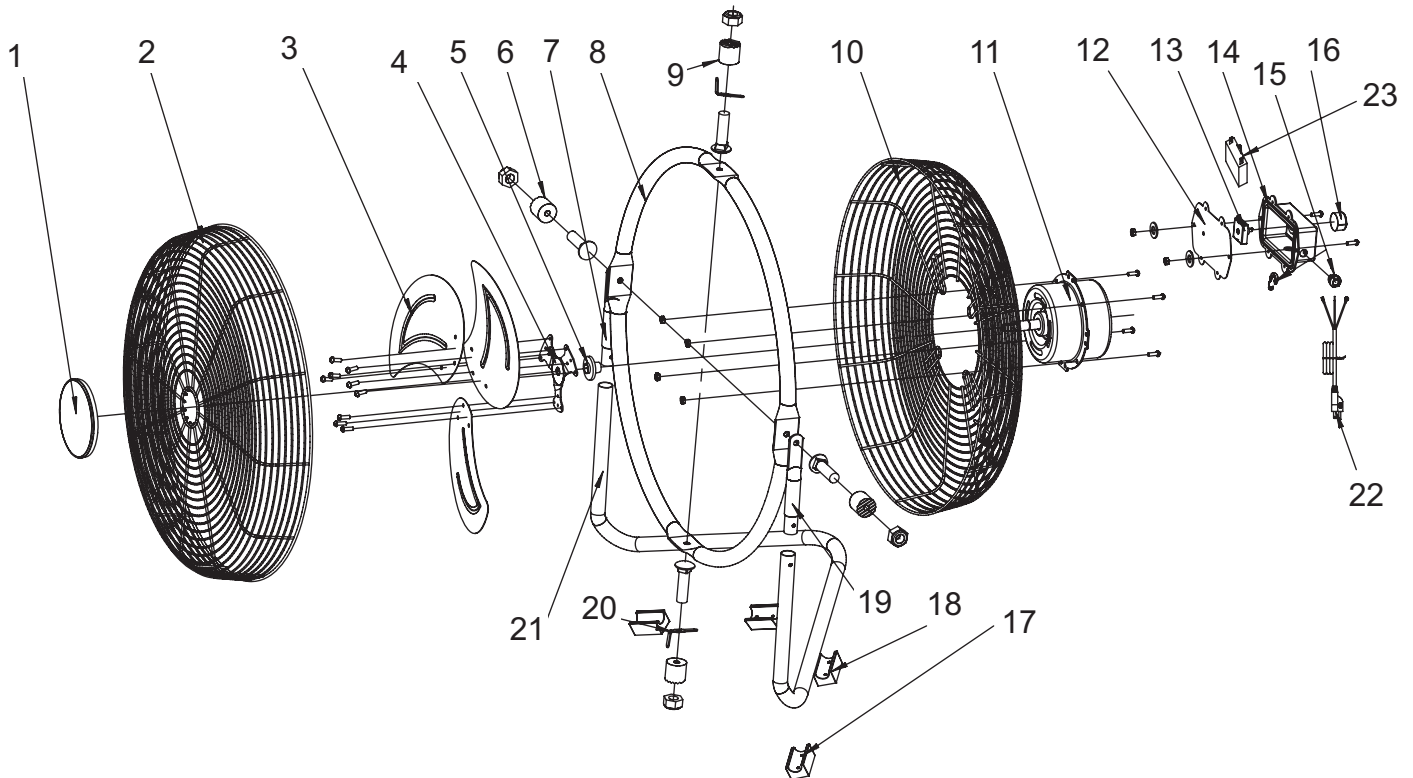
Item #	Description	Part Number
13	Switch	95-031-0130
14	Cord Bushing	95-026-0170
15	Switch Cover	95-031-0520
16	Control Knob	95-027-0120
17	Power Cord	95-026-0250
18	Capacitor	95-004-0230
19	Foot	95-023-0210
20	Pipe Frame L/R	95-009-0500
21	Frame Bracket A	95-009-0510
22	Frame Bracket B	95-009-0520
23	Wheel Bolt	95-008-0310
24	Wheel	95-008-0110

NEVER LEAVE A FAN
OPERATING UNATTENDED



Portable
Air Circulator

Exploded View - 20" Floor Fan



Replacement Parts

Item #	Description	Part Number
1	Logo Plate	95-043-0320
2	Front Grille	95-032-0160
3	Fan Blade Assembly	95-003-0610
4		
5		
6	Frame Washer	95-024-0250
7	Frame-Support L	95-024-0260
8	Main Circle Tube	95-024-0280
9	Top Washer	95-024-0290
10	Rear Grille	95-032-0260
11	Motor	95-030-0525
12	Switch Holder	95-031-0310

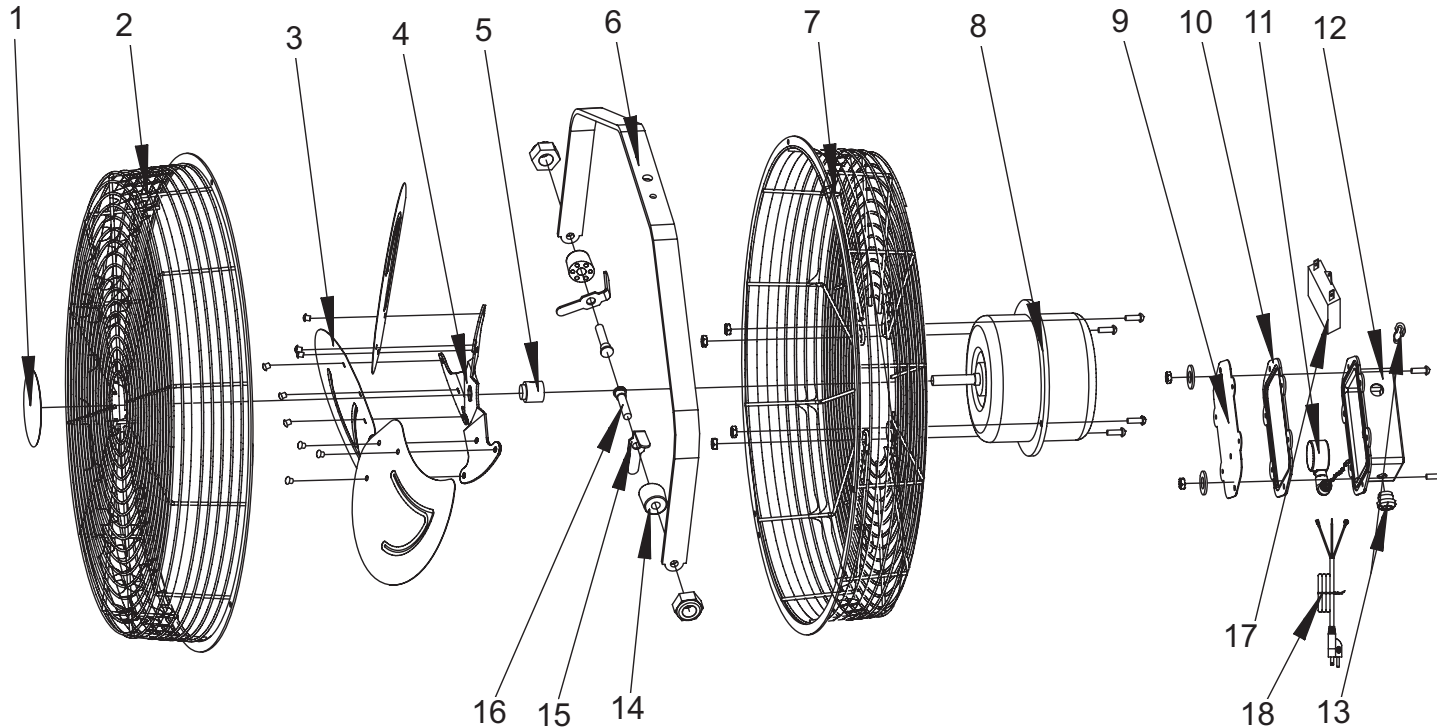
Item #	Description	Part Number
13	Switch	95-031-0120
14	Switch Cover	95-031-0510
15	Cord Bushing	95-026-0165
16	Control Knob	95-027-0110
17	Front Foot	95-023-0220
18	Rear Foot	95-023-0230
19	Frame-Support R	95-024-0270
20	Swivel Spacer	95-050-0180
21	Lower Support Frame	95-024-0240
22	Power Cord	95-026-0240
23	Capacitor	95-004-0225

NEVER LEAVE A FAN
OPERATING UNATTENDED



Portable
Air Circulator

Exploded View - 18" Wall Fan



Replacement Parts

Item #	Description	Part Number
1	Logo Plate	95-043-0310
2	Front Grille	95-032-0150
3	Fan Blade Assembly	95-003-0600
4		
5		
6	Upper Bracket	95-061-0100
7	Rear Grille	95-032-0250
8	Motor	95-030-0515
9	Switch Holder	95-031-0300

Item #	Description	Part Number
10	Switch Gasket	95-031-0340
11	Switch	95-031-0110
12	Switch Cover	95-031-0500
13	Cord Bushing	95-026-0160
14	Pivot Washer	95-024-0300
15	Swivel Spacer	95-050-0185
16	Pivot Screw	95-024-0310
17	Capacitor	95-004-0215
18	Power Cord	95-026-0230

Pinnacle Products International, Inc. reserves the right to make any changes in materials, specifications, prices or design without notice. Pinnacle Products International, Inc. may also discontinue items at any time.

NEVER LEAVE A FAN
OPERATING UNATTENDED



Portable
Air Circulator

1 YEAR LIMITED WARRANTY

PINNACLE PRODUCTS INTERNATIONAL, INC. WARRANTS THIS PRODUCT TO THE ORIGINAL RETAIL PURCHASER ONLY, TO BE FREE FROM DEFECTS IN MATERIAL AND WORKMANSHIP FOR A PERIOD OF ONE (1) YEAR FROM THE DATE OF INITIAL PURCHASE. THIS PRODUCT MUST BE PROPERLY INSTALLED, MAINTAINED AND OPERATED IN ACCORDANCE WITH THE INSTRUCTIONS PROVIDED.

PINNACLE PRODUCTS INTERNATIONAL, INC. REQUIRES REASONABLE PROOF OF YOUR DATE OF PURCHASE FROM AN AUTHORIZED RETAILER OR DISTRIBUTOR. THEREFORE, YOU SHOULD KEEP YOUR SALES SLIP, INVOICE, OR CANCELLED CHECK FROM THE ORIGINAL PURCHASE. THIS LIMITED WARRANTY SHALL BE LIMITED TO THE REPAIR OR REPLACEMENT OF PARTS, WHICH PROVE DEFECTIVE UNDER NORMAL USE AND SERVICE WITHIN THE WARRANTY PERIOD, AND WHICH **PINNACLE PRODUCTS INTERNATIONAL, INC.** SHALL DETERMINE AT ITS REASONABLE DISCRETION.

THIS WARRANTY DOES NOT APPLY TO PRODUCTS PURCHASED FOR RENTAL USE.

THIS LIMITED WARRANTY DOES NOT COVER REPLACEMENT OF BELTS OR TIGHTENING OF BELTS, OR ANY FAILURES OR OPERATING DIFFICULTIES DUE TO NORMAL WEAR AND TEAR, ACCIDENT, ABUSE, MISUSE, ALTERATION, MISAPPLICATION, IMPROPER INSTALLATION OR IMPROPER MAINTENANCE AND SERVICE BY YOU OR ANY THIRD PARTY. FAILURE TO PERFORM NORMAL AND ROUTINE MAINTENANCE ON THE FAN, SHIPPING DAMAGE, DAMAGE RELATED TO INSECTS, BIRDS, OR ANIMALS OF ANY KIND, AND DAMAGE DUE TO WEATHER CONDITIONS ARE ALSO NOT COVERED. IN ADDITION, THE LIMITED WARRANTY DOES NOT COVER DAMAGE TO THE FINISH, SUCH AS SCRATCHES, DENTS, DISCOLORATION, RUST OR OTHER WEATHER DAMAGE, AFTER PURCHASE.

ALL TRANSPORTATION COSTS FOR THE RETURN OF THE DAMAGED PRODUCT OR PARTS WILL BE THE RESPONSIBILITY OF THE PURCHASER. UPON RECEIPT OF DAMAGED ITEM, **PINNACLE PRODUCTS INTERNATIONAL, INC.** WILL EXAMINE THE ITEM AND DETERMINE IF DEFECTIVE.

PINNACLE PRODUCTS INTERNATIONAL, INC. WILL REPAIR OR REPLACE AND RETURN THE ITEM, FREIGHT PRE-PAID. IF **PINNACLE PRODUCTS INTERNATIONAL, INC.** FINDS THE ITEM TO BE IN NORMAL OPERATING CONDITION, OR NOT DEFECTIVE, THE ITEM WILL BE RETURNED FREIGHT COLLECT.

THIS LIMITED WARRANTY IS IN LIEU OF ALL OTHER EXPRESS WARRANTIES. **PINNACLE PRODUCTS INTERNATIONAL, INC.** DISCLAIMS ALL WARRANTIES FOR PRODUCTS THAT ARE PURCHASED FROM SELLERS OTHER THAN AUTHORIZED RETAILERS OR DISTRIBUTORS.

AFTER THE PERIOD OF THE ONE (1) YEAR LIMITED WARRANTY EXPIRES, **PINNACLE PRODUCTS INTERNATIONAL, INC.** DISCLAIMS ANY AND ALL IMPLIED WARRANTIES, INCLUDING WITHOUT LIMITATION THE IMPLIED WARRANTIES OF MERCHANTABILITY AND FITNESS FOR A PARTICULAR APPLICATION. FURTHER, **PINNACLE PRODUCTS INTERNATIONAL, INC.** SHALL HAVE NO LIABILITY WHATSOEVER TO PURCHASER OR ANY THIRD PARTY FOR ANY SPECIAL, INDIRECT, PUNITIVE, INCIDENTAL, OR CONSEQUENTIAL DAMAGES. **PINNACLE PRODUCTS INTERNATIONAL, INC.** ASSUMES NO RESPONSIBILITY FOR ANY DEFECTS CAUSED BY THIRD PARTIES. THIS LIMITED WARRANTY GIVES THE PURCHASER SPECIFIC LEGAL RIGHTS; A PURCHASER MAY HAVE OTHER RIGHTS DEPENDING UPON WHERE HE OR SHE LIVES. SOME STATES DO NOT ALLOW THE EXCLUSION OR LIMITATION OF SPECIAL, INCIDENTAL OR CONSEQUENTIAL DAMAGES, OR LIMITATIONS ON HOW LONG A WARRANTY LASTS, SO THE ABOVE EXCLUSION AND LIMITATIONS MAY NOT APPLY TO YOU.

PINNACLE PRODUCTS INTERNATIONAL, INC. DOES NOT AUTHORIZE ANY PERSON OR COMPANY TO ASSUME FOR IT ANY OTHER OBLIGATION OR LIABILITY IN CONNECTION WITH THE SALE, INSTALLATION, USE, REMOVAL, RETURN, OR REPLACEMENT OF ITS EQUIPMENT, AND NO SUCH REPRESENTATIONS ARE BINDING ON **PINNACLE PRODUCTS INTERNATIONAL, INC.**

ALWAYS BE SURE TO SPECIFY **MODEL NUMBER AND SERIAL NUMBER** WHEN MAKING ANY CLAIM WITH **PINNACLE PRODUCTS INTERNATIONAL, INC.** FOR YOUR CONVENIENCE USE THE SPACE PROVIDED BELOW TO LIST THIS INFORMATION:

Model #: _____ Serial #: _____

Date of Purchase: _____