


BigCountryBreeze


PROTEMP

Model #: BCB-30-DDF, PT-30-DDF

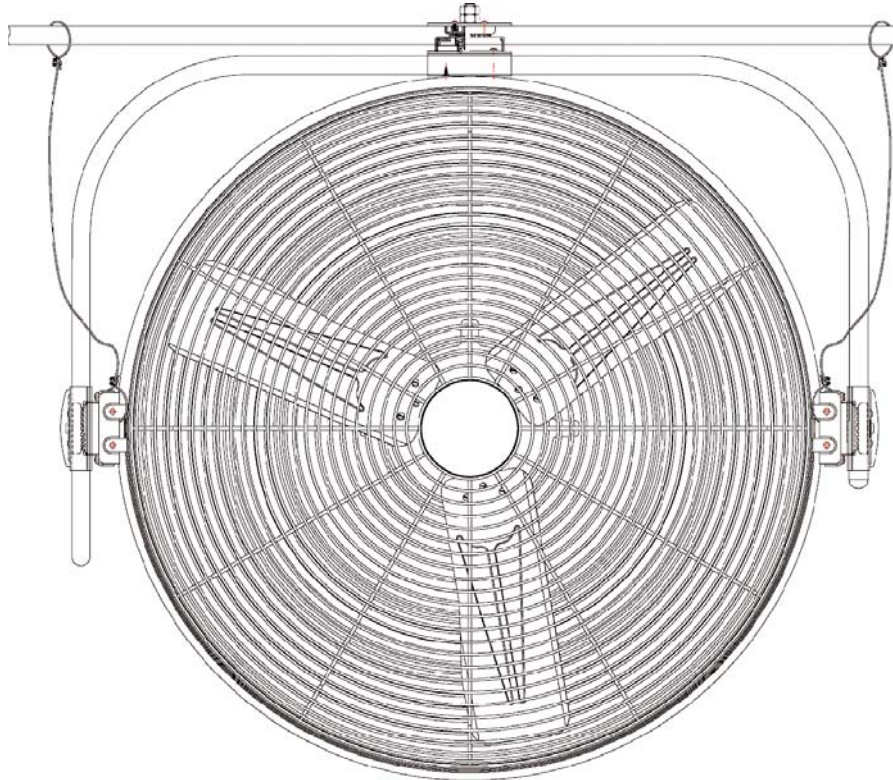


Table of Contents

Safety Information.....2
 Installation.....2
 Ceiling Mount Installation.....2-3
 Maintenance and Storage.....3
 Exploded View.....4
 Fan Replacement Parts List.....4
 Ceiling Mount Exploded View5
 Ceiling Mount Replacement Parts List.....5
 Troubleshooting.....6
 Warranty.....6

| Model | MAX HP | CFM | |
|-------|--------|-------|-------|
| | | HIGH | LOW |
| 30" | 1/4 HP | 8,000 | 6,300 |

IMPORTANT: Read and understand all of the directions in this manual before assembling, starting or servicing the fan. Improper use of this fan can cause serious injury. Keep this manual for future reference.

This product meets or exceeds the requirements of OSHA 1910.212(a)(5), the standard which regulates electric fan blade safety, and is certified, by Underwriters Laboratories, Inc.

CONSUMER: Retain this manual for future reference. This product protected under U.S. Patent # 7,413,199

Pinnacle Products International, Inc. 668 Stony Hill Road #302 Yardley, PA 19067 USA
 Phone: 215-891-8460 Fax: 215-891-8461 Web: www.pinnacleint.com Email: info@pinnacleint.com

IMPORTANT: READ ALL INSTRUCTIONS CAREFULLY BEFORE ASSEMBLY, SERVICE OR USE OF THIS FAN. FAILURE TO COMPLY WITH THESE INSTRUCTIONS COULD RESULT IN SERIOUS PERSONAL INJURY AND / OR PROPERTY DAMAGE.

Safety Information

▲WARNING

1. This unit is designed for indoor use only. Do not expose to elements or allow to become wet. Do not use this fan in a window. Do not insert fingers or any foreign objects into the fan.
2. To guard against electric shock while operating, do not allow fan to come in contact with other grounded objects such as pipes, radiators, etc.
3. To reduce the risk of electrical shock, do not use with any solid state speed control device.
4. Do not use to exhaust hazardous chemicals or use near any flammable liquids or gases as sparks from motor may ignite fumes.
5. Turn off, unplug unit, and wait for fan to stop before moving, storing, and / or changing operating locations.
6. Operate only on 115 volt 60 Hz (cycle) current with a minimum of a 15 amp circuit.
7. Before operating always check fan for loose or damaged parts. Inspect power cord for any damage. Never use fan if any parts are damaged or missing. Never use fan without safety guards attached.
8. When used with an extension cord, use only cord of proper size (Amp rating), UL listed, and with receptacle to accept three prong grounded plug furnished on the fan's power cord. Always keep power cord and extension cords away from heat, oil, and sharp edges. Inspect cords periodically and replace if damaged.
9. Disconnect fan from power source when not in use, before servicing and when cleaning or repairing.
10. Repair of this appliance should be done by a qualified electrician.
11. In case of power failure, turn fan off at knob to prevent unexpected restarting and component damage.
12. Keep children away from fan at all times.

For your convenience use the space provided below to list this information:

Model #: _____ Serial #: _____

Date of Purchase: _____

Floor Installation

Simply locate fan in safe, desired position on level ground, and connect to approved power source.

Ceiling Mount Installation

▲WARNING The installer **MUST** be certain that the ceiling that the mounting bracket is mounted to is able to support 100 pounds continuously.

MOUNTING BRACKET INSTALLATION:

1. Attach Cart Frame to Ceiling beam using U-bolts shown in Figure 1.
2. Assemble and attach Ceiling Mount Assembly as shown in Figure 5 on page 5.

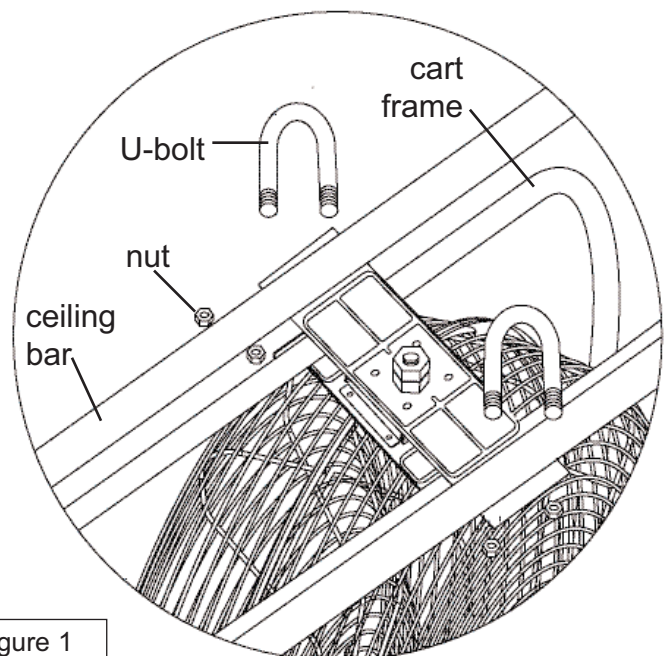


figure 1

**NEVER LEAVE A FAN
OPERATING UNATTENDED**



PROTEMP

Floor / Ceiling
Mounted Air Circulator

Ceiling Mount Installation (Continued)

SAFETY CABLE INSTALLATION:

1. After the fan is securely mounted, feed the safety cable between one of the swivel brackets as shown in figure 2.

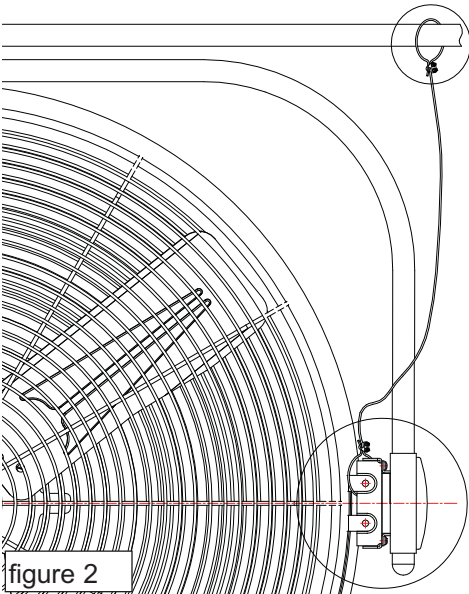


figure 2

2. Pull safety cable through and secure cable with safety cable U-bolt as shown in figure 3
3. Take other end of cable and wrap around beam
4. Secure cable loop as shown in step 2. Be sure there is approximately 2 inches of slack in the safety cable once both ends are secured.
5. Repeat on other side of fan so there are two safety cables.

Operation

This fan is equipped with a 2-speed control switch.

To start fan:

1. Be sure the Power Switch is in the middle (OFF) position.
2. Connect to an approved power source.
3. Make sure area is clear from all obstructions.
4. Push Power Switch to the LOW position and allow to operate for 10 seconds.
5. Once 10 seconds have passed, you may now push the Power Switch to the HIGH position.

To turn off the fan, simply return Power Switch to the (OFF) position.

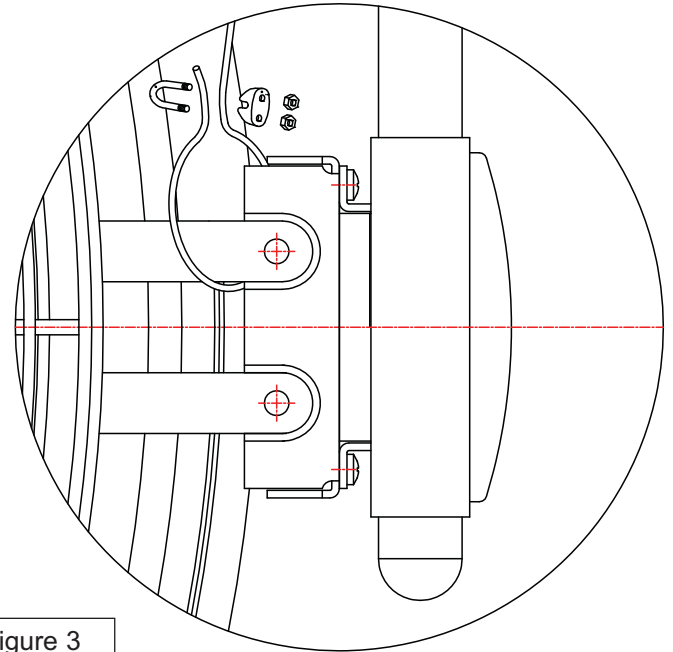


figure 3

Note: For longer parts life, after 10 hours of continuous operation, turn fan off for 15 minutes to allow motor to cool.

Maintenance and Storage

1. Inspect your fan before each use. Check all wires and extension cords, following the procedure outlined on Page 2 (Safety Information).
2. After use, always be sure fan's Power Switch is in the OFF position before unplugging.

NEVER LEAVE A FAN
OPERATING UNATTENDED



Floor / Ceiling
Mounted Air Circulator

Exploded View

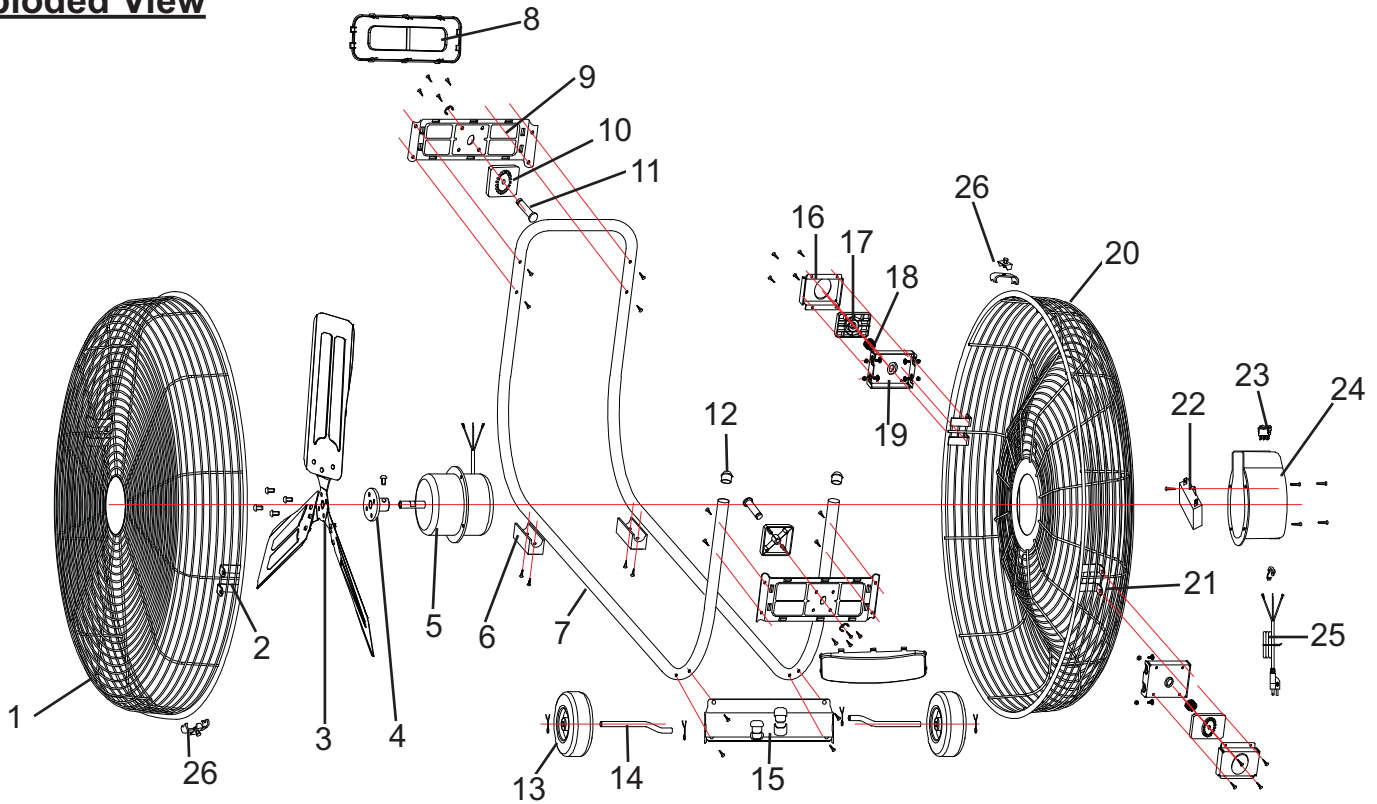


figure 4: Exploded view of fan

Replacement Parts

| Item# | Description | Part Number |
|-------|--------------------------|-------------|
| 1 | Front Guard | 95-032-0140 |
| 2 | Front Swivel Bracket | 95-050-0100 |
| 3 | Fan Blade Assy | 95-003-0500 |
| 4 | Fan Holder | 95-003-0150 |
| 5 | Motor | 95-030-0500 |
| 6 | Frame Foot | 95-023-0200 |
| 7 | Cart Frame | 95-009-0400 |
| 8 | Swivel Cover | 95-050-0105 |
| 9 | Frame Swivel Bracket | 95-050-0110 |
| 10 | Frame Upper Swivel Latch | 95-050-0120 |
| 11 | Swivel Latch Pin | 95-050-0130 |
| 12 | Frame Cap | 95-011-0300 |
| 13 | Wheel | 95-008-0160 |

| Item# | Description | Part Number |
|-------|--------------------------|-------------|
| 14 | Wheel Axle | 95-008-0260 |
| 15 | Wheel Frame | 95-008-0500 |
| 16 | Upper Swivel Housing | 95-050-0140 |
| 17 | Frame Lower Swivel Latch | 95-050-0150 |
| 18 | Latch Spring | 95-060-0155 |
| 19 | Lower Swivel Housing | 95-050-0160 |
| 20 | Rear Guard | 95-032-0240 |
| 21 | Rear Swivel Bracket | 95-050-0170 |
| 22 | Capacitor | 95-004-0200 |
| 23 | Power Switch | 95-025-0500 |
| 24 | Rear Motor Cover | 95-048-0100 |
| 25 | Power Cord | 95-026-0150 |
| 26 | Guard Latch Assembly | 95-033-0220 |

Specifications subject to change without notice

NEVER LEAVE A FAN
OPERATING UNATTENDED



Floor / Ceiling
Mounted Air Circulator

Ceiling Kit Exploded View

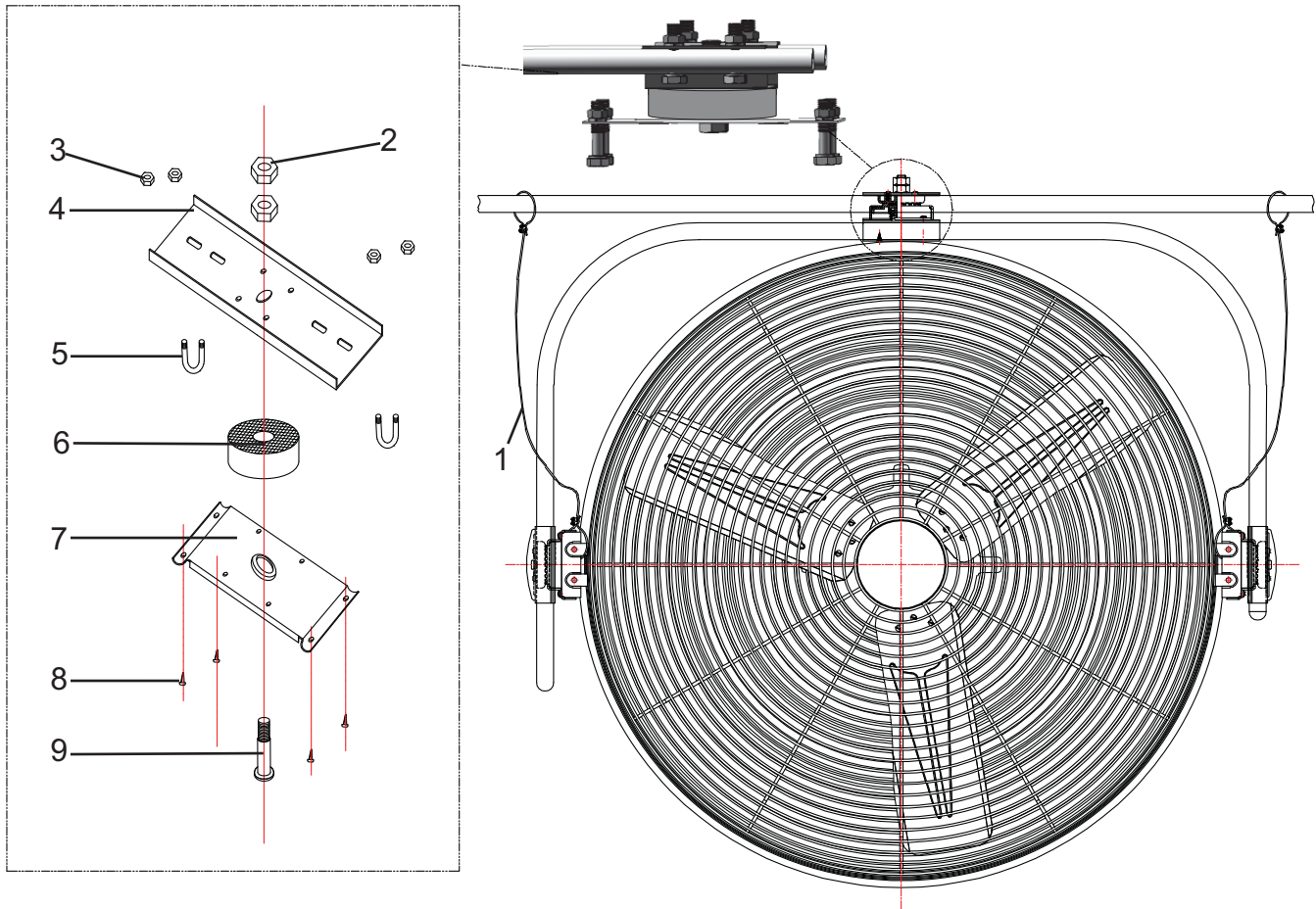


figure 5: Exploded view of ceiling mount kit

Ceiling Kit Replacement Parts

| Item# | Description | Part Number |
|-------|----------------------------|-------------|
| 1 | Safety Cable Assy | 95-060-0100 |
| 2 | Nut for Ceiling Swivel Pin | 95-060-0180 |
| 3 | U-Bolt Nut | 95-060-0125 |
| 4 | Upper Ceiling Bracket | 95-060-0110 |
| 5 | U-Bolt | 95-060-0120 |
| 6 | Top Washer | 95-060-0120 |

| Item# | Description | Part Number |
|-------|-----------------------|-------------|
| 7 | Lower Ceiling Bracket | 95-060-0160 |
| 8 | Tapping Screw 5-15mm | 95-060-0195 |
| 9 | Ceiling Swivel Pin | 95-060-0170 |

Pinnacle Products International, Inc. reserves the right to make any changes in materials, specifications, prices or design without notice. Pinnacle Products International, Inc. may also discontinue items at any time.

**NEVER LEAVE A FAN
OPERATING UNATTENDED**



Floor / Ceiling
Mounted Air Circulator

Troubleshooting Guide

| Problem | Possible Cause | Corrective Action |
|---|----------------------------------|--|
| Fan does not operate | 1. No power | Inspect Power Cord for damage. Be sure unit is plugged in and turned on. |
| | 2. Bad switch | Replace Power Switch (Note: To prolong life of Power Switch and motor, it is recommended that the fan is first operated in LOW for 5-10 seconds before switching to HIGH). |
| Reduced Air Flow | 1. Loose fan blade holder | Tighten Fan holder screw to secure Fan Holder to motor shaft. |
| | 2. Obstructed airflow | Inspect back of fan to remove obstruction. be sure back of fan has sufficient inflow of air. |
| | 3. Motor is humming | Capacitor is damaged. Replace Capacitor. |
| Excess Noise (vibration, slapping, squealing) | 1. Ceiling bracket is not tight. | Turn off fan, and tighten Ceiling Bracket bolts. |
| | 2. Loose fan blade holder | Tighten Fan holder screw to secure Fan Holder to motor shaft. |
| | 3. Front or Rear Guard is loose | Inspect and tighten guard latches. |
| | 4. Loose motor | Be sure motor bolts are tight and secure. |

1 YEAR LIMITED WARRANTY

Pinnacle Products International, Inc. warrants this product to the original retail purchaser only, to be free from defects in material and workmanship for a period of one (1) year from the date of initial purchase. This product must be properly installed, maintained and operated in accordance with the instructions provided.

Pinnacle Products International, Inc. requires reasonable proof of your date of purchase from an authorized retailer or distributor. Therefore, you should keep your sales slip, invoice, or cancelled check from the original purchase. This Limited Warranty shall be limited to the repair or replacement of parts, which prove defective under normal use and service within the warranty period, and which **Pinnacle Products International, Inc.** shall determine at its reasonable discretion.

This warranty does not apply to products purchased for rental use.

This Limited Warranty does not cover any failures or operating difficulties due to normal wear and tear, accident, abuse, misuse, alteration, misapplication, improper installation or improper maintenance and service by you or any third party. Failure to perform normal and routine maintenance on the fan, shipping damage, damage related to insects, birds, or animals of any kind, and damage due to weather conditions are also not covered. In addition, the Limited Warranty does not cover damage to the finish, such as scratches, dents, discoloration, rust or other weather damage, after purchase.

All transportation costs for the return of the damaged product or parts will be the responsibility of the purchaser. Upon receipt of damaged item, **Pinnacle Products International, Inc.** will examine the item and determine if defective. **Pinnacle Products International, Inc.** will repair or replace and return the item, freight pre-paid.

If **Pinnacle Products International, Inc.** finds the item to be in normal operating condition, or not defective, the item will be returned freight collect.

This Limited Warranty is in lieu of all other express warranties. **Pinnacle Products International, Inc.** disclaims all warranties for products that are purchased from sellers other than authorized retailers or distributors. AFTER THE PERIOD OF THE ONE (1) YEAR LIMITED WARRANTY EXPIRES, **Pinnacle Products International, Inc.** DISCLAIMS ANY AND ALL IMPLIED WARRANTIES, INCLUDING WITHOUT LIMITATION THE IMPLIED WARRANTIES OF MERCHANTABILITY AND FITNESS FOR A PARTICULAR APPLICATION. FURTHER, **Pinnacle Products International, Inc.** SHALL HAVE NO LIABILITY WHATSOEVER TO PURCHASER OR ANY THIRD PARTY FOR ANY SPECIAL, INDIRECT, PUNITIVE, INCIDENTAL, OR CONSEQUENTIAL DAMAGES. **Pinnacle Products International, Inc.** assumes no responsibility for any defects caused by third parties. This Limited Warranty gives the purchaser specific legal rights; a purchaser may have other rights depending upon where he or she lives. Some states do not allow the exclusion or limitation of special, incidental or consequential damages, or limitations on how long a warranty lasts, so the above exclusion and limitations may not apply to you.

Pinnacle Products International, Inc. does not authorize any person or company to assume for it any other obligation or liability in connection with the sale, installation, use, removal, return, or replacement of its equipment, and no such representations are binding on **Pinnacle Products International, Inc.** Always be sure to specify model number and serial number when making any claim with **Pinnacle Products International, Inc.**